



Q STATION
A NEW PLACE TO DISCOVER

**CONFERENCES
& EVENTS**



THE UN-CONFERENCE
CONFERENCE VENUE



THE UN-CONFERENCE CONFERENCE VENUE

Located in the stunning Sydney Harbour National Park, Q Station is surrounded by stunning Australian bushland and features panoramic views of Sydney Harbour and Manly Cove.



Host a meeting, event, or multi-day conference in any or all of the 11 heritage-listed meeting and events spaces. Each space offers a unique outlook across the 33 hectares the property occupies, as well as unique features that speak to the fascinating history of the site.



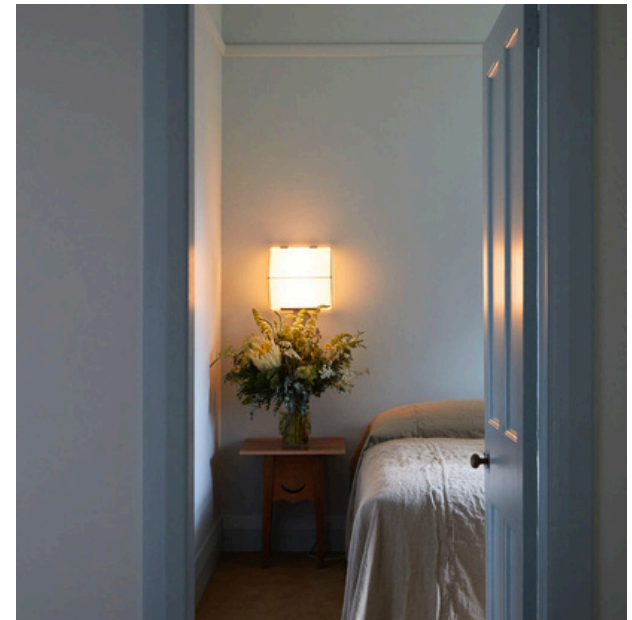
In addition to meetings space, Q also offers 105 accommodation rooms, 9 cottages, a world class restaurant, private beach, and wharf at your doorstep. Plus, enjoy the many options you have for activities and team building, including history tours, local kayaking, cocktail masterclasses and more.

Located just 30 minutes from the centre of the Sydney CBD, Q Station Manly is a destination in itself, offering the convenience of a city location with all that you would normally associate with a rural retreat. Rejuvenate and inspire your guests in this truly unique setting.

Winter Conference Offer

Book your conference at Q Station in Winter and receive the below.

- A complimentary night for every 10 rooms booked
- Indulge in a cocktail hour with mulled wine and appetisers
- For every full day delegate package booked, receive a \$5 credit towards dining



RE-CONNECT

CHOOSE FROM A WIDE RANGE OF
INDOOR AND OUTDOOR VENUES.



EVENT SPACE CAPACITIES

MEETINGS & EVENTS	 THEATRE	 CLASSROOM	 BOARDROOM	 U-SHAPE	 CABARET
P3 – Former Men’s Smoking Room 10 x 6 metres 60 sq metres 4.13 metres high	48	24	20	25	-
P7 – Former Ladies’ Sewing Room 10 x 6 metres 60 sq metres 4.13 metres high	48	24	20	25	-
P10 – Dr Mackellar Room 8.5 x 5.5 metres 46.75 sq metres 3.67 metres high	36	18	15	15	-
P12 – Dr Salter Room 7.5 x 4.8 metres 36 sq metres 3.55 metres high	-	-	12	-	-
P15 – Former Asiatics 15 x 8.5 metres 127.5 sq metres 4.97 metres high	80	40	26	26 (DU 42)	40
P16 – Former Asiatics 15 x 8.5 metres 127.5 sq metres 4.97 metres high	80	40	26	26 (DU 42)	40
P27 – Governor Bourke Ballroom 29.4 x 9.5 metres 279 sq metres 4.45 metres high	200	100	-	-	112
A2 – Dr Cumpston Room 11.5 x 8.5 metres 167 sq metres 3.45 metres high	120	60	26	36	63
H1A – Nurse Ford 13.2 x 7.3 metres 96 sq metres 4.5 metres high	90	45	26	32	56
H1B – Nurse Egan 13.2 x 7.3 metres 96 sq metres 4.5 metres high	90	45	26	32	56

DU= double u shape



DAY DELEGATE PACKAGES

FULL DAY

- Continuous tea & coffee
- Morning tea
- Lunch
- Afternoon tea
- Notepads, pens, mints & water
- Complimentary Wi-Fi
- Complimentary parking
- Canvas screen or LCD screen*
- 1 x Whiteboard
- 1 x Flipchart

From \$99 per person

HALF DAY

- Continuous tea & coffee
- Morning tea or afternoon tea
- Lunch
- Notepads, pens, mints & water
- Complimentary WiFi
- Complimentary parking
- Canvas screen or LCD screen*
- 1 x Whiteboard
- 1 x Flipchart

From \$89 per person

*Dependent on event space booked



MORNING/AFTERNOON

- Continuous tea & coffee
- Morning tea or afternoon tea
- Notepads, pens, mints & water
- Complimentary Wi-Fi
- Complimentary parking
- Canvas screen
- 1 x Whiteboard
- 1 x Flipchart

From \$40 per person

BOARDROOM

- Continuous tea & coffee
- Morning tea
- Lunch
- Afternoon tea
- Notepads, pens, mints & water
- Complimentary Wi-Fi
- Complimentary parking
- 1 x Whiteboard
- 1 x Flipchart

Full Day: \$99.00 | Half Day: \$89.00
P12 Only



EXTRAS

Barista Coffee \$5.00 regular • \$5.50 large
 Barista Coffee Cart (Groups over 20) From \$400 8am-2pm
 Grazing Breakfast \$30.00 per person

Pre-dinner drinks & canapés From \$22.00 per person
 Light breakfast (sliced fruit & Danish pastries) \$12.50 per person
 Sparkling or still water \$12.00 per person

DINING OPTIONS

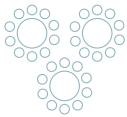


Q STATION OFFERS A WIDE RANGE OF DINING OPTIONS TO SUIT THE STYLE AND FORMAT OF YOUR MEETING OR EVENT.

Dine harbourside at the Boilerhouse Kitchen & Bar, for the perfect combination of waterside dining and superb food and wine, set against the backdrop of nostalgic buildings. Alternatively, the old Dining Room, Governor Bourke Ballroom, or the Glasshouse make incredible backdrops to a banquet or cocktail style dinner event.





EVENT SPACE CAPACITIES

DINING			
	BANQUET	FAMILY STYLE	COCKTAIL
Boilerhouse - Mezzanine	80	80	150
Boilerhouse - Lower Deck	40	40	80
Boilerhouse - Terrace	50	-	100
Boilerhouse - Engine Room Bar	-	20	30
The Dining Room	80	60	100
Manly Cove	60	80	100
The Glasshouse	-	25	40
Wharf*	50	50	100

*Day use

FOOD OPTIONS

CANAPÉS

½ hour duration	\$24.00 per person
1 hour duration	\$33.00 per person
1 ½ hour duration	\$40.00 per person
2 hour duration	\$45.00 per person
3 hour duration	\$54.00 per person

PRIVATE DINING

2-Course Alternate Menu	\$99.00 per person
Includes 2-course alternate serve, house beverage on arrival and 3 hours room hire	
3-Course Alternate Menu	\$115.00 per person
Includes 3-course alternate serve, house beverage on arrival and 3 hours room hire	
Shared Style	\$120.00 per person
Includes 3-course shared menu, house beverage on arrival and 3 hours room hire	

BOILERHOUSE

2-Course Shared Dinner Menu	\$80.00 per person
3-Course Shared Dinner Menu	\$95.00 per person
Boilerhouse Pizza Deck	\$55.00 per person
Burger Grill	\$55.00 per person
Big BBQ	\$75.00 per person
Shared Lunch Menu	\$75.00 per person

CORPORATE WINE PAIRING

2-Course + Wine Sharing	\$140.00 per person
-------------------------------	---------------------



PLATTERS (Serves 8 - 10 Guests)

Antipasti	\$90.00 per platter
Selection of cured meats, marinated vegetables, olives and lavosh crackers	
Cheeses	\$90.00 per platter
Selection of three Australian cheeses with quince paste, grapes and lavosh crackers	
Oysters	\$130.00 per platter
Two dozen freshly shucked Sydney rock oysters with lemon and mignonette dressing	
Hot Finger Food	\$90.00 per platter
Includes chef selection of four hot items, including one vegetarian	
Steamer Baskets	\$90.00 per platter
Includes BBQ pork buns, vegetable gow and crispy chicken and prawn wontons with soy dipping sauce	
Sushi - 60 pieces	\$260.00 per platter
Selection maki rolls, California rolls and nigiri with soy and wasabi	
Seasonal Fruits	\$70.00 per platter
Petits Fours	\$12.00 per platter
3 pieces per person	

BEVERAGE OPTIONS

Sparkling, white & red wine, beer & cider

STANDARD

2 Hours	\$32.00 per person
3 Hours	\$38.00 per person
4 Hours	\$43.00 per person
5 Hours	\$47.00 per person

DELUXE

2 Hours	\$37.00 per person
3 Hours	\$43.00 per person
4 Hours	\$47.00 per person
5 Hours	\$51.00 per person

ELITE

2 Hours	\$42.00 per person
3 Hours	\$48.00 per person
4 Hours	\$52.00 per person
5 Hours	\$56.00 per person

PREMIUM

2 Hours	\$53.00 per person
3 Hours	\$62.00 per person
4 Hours	\$71.00 per person
5 Hours	\$80.00 per person

PRESTIGE - DE BEAUREPAIRE WINERY

2 Hours	\$65.00 per person
3 Hours	\$76.00 per person
4 Hours	\$90.00 per person
5 Hours	\$98.00 per person

Make it french!

COCKTAILS

2 Hours	\$60.00 per person
3 Hours	\$80.00 per person
4 Hours	\$95.00 per person
5 Hours	\$100.00 per person

NON-ALCOHOLIC DRINKS

2 Hours	\$20.00 per person
3 Hours	\$25.00 per person
4 Hours	\$30.00 per person
5 Hours	\$35.00 per person



Ask our Sommelier to quote your own beverage package from our NSW awarded Boilerhouse restaurant wine list. Beverages on consumption can be organised through the events team.

ACCOMMODATION

Q STATION'S 105 ACCOMMODATION ROOMS ALL OFFER PRIVACY, CONTEMPORARY COMFORT AND A TRULY UNIQUE SETTING TO COMPLETE YOUR RELAXING EXPERIENCE OF THE SITE.

Choose from rooms with panoramic views of Sydney's incredible harbour, the extensive grounds or the historic buildings of Q Station.



Q STATION OFFERS A RANGE OF DIFFERENT ROOM TYPES INCLUDING THE FOLLOWING:



HERITAGE ROOMS

Our Heritage rooms come in four distinct room types including our Heritage Harbourside rooms featuring stunning glimpses of Sydney Harbour, as well as our Heritage Queen, Heritage King and Heritage Suites. Each room is comfortably designed with either a Queen or King bed, French style doors that open onto the balcony, and ensuite bathroom. Rooms can accommodate 2 people, or our Heritage Suites can accommodate 3 adults or 2 adults and a child.



THREE-BEDROOM COTTAGES

Once used as quarantine staff homes, these spacious three bedroom cottages have spectacular views of the grounds, harbour and historic buildings of Q Station. They feature one king room as well as two queen rooms, a living room, bathroom and kitchenette with cooking facilities. While every cottage is different, most feature backyards with balconies or a verandah. These rooms are great rooms if looking for a twin share option or a re-connection cottage.



TERRACES

The Terraces, originally used as doctors and nurses quarters, provide the ultimate accommodation choice for families or groups due to their more private location away from the main accommodation precinct. Nestled in the hill surrounded by National Park with sweeping views across the top of Boilerhouse Restaurant and headland beyond, these two apartments have different configurations, and sleep six.

RE-ENGAGE
—
RE-INSPIRE



TOURS



You never forget your time at Q Station. The impact of this amazing site; its size, isolation, natural beauty, superb harbour views, historic buildings will leave you wanting to know more. Take time out of your hectic schedule to learn a little about the past history of this NSW heritage listed site.



HISTORY TALK

If time is limited, one of our knowledgeable guides can come and talk to your group to set the scene for where you are conferencing. This can be in a formal setting as part of your program or an informal chat over morning tea or drinks at the end of the day.

Pricing given for talks concluding prior to 7pm. Surcharge is applied for talks after 7pm.

Duration: 15- 20 minutes + 10 minutes for questions if necessary.

Cost: \$8 per person.

Minimum cost of \$160 for up to 20 adults.



QUARANTINE WANDER TOUR

The wharf and hospital areas are some of the most significant in understanding the day to day operations of life at the Quarantine Station.

Your guide will take you through some key buildings in this area. Starts and finishes at the Visitor Centre.

Duration: 60 minutes.

Cost: \$30 per person.

Minimum cost of \$300 for 10 adults.



QUARANTINE STATION STORY TOUR

With hectares of the site to explore, there are stories to tell throughout the property.

This flexible tour can start and finish at any location and can be a 60-minute, 90-minute or 2-hour tour. A great way to fit in a tour into your program to or from your conference room or lunch venue.

Duration: 90 minutes - 120 minutes
Cost: \$45 per person
 Minimum cost of \$450 for 10 adults.



AFTER DARK TOURS

As darkness descends over Q Station many of our shadowy buildings have stories to tell.

Whether you believe in ghosts or not, this storytelling tour will keep you entertained as you discover the intriguing stories of Q Station's history, its characters; their past lives and today's spirits that have never left.

WEEKDAY (MON-THURS)

Duration: 60 minutes
Cost: \$40 per person
 Minimum cost of \$400 for 10 adults.

Duration: 90 minutes
Cost: \$50 per person
 Minimum cost of \$500 for 10 adults.

WEEKEND (FRI-SAT)

Duration: 60 minutes
Cost: \$50 per person
 Minimum cost of \$500 for 10 adults.

Duration: 90 minutes
Cost: \$55 per person
 Minimum cost of \$550 for 10 adults.

ACTIVITY OPTIONS

WHY NOT ADD THESE ACTIVITIES TO YOUR MEETING OR EVENT.

KAYAK TO A LOCAL BEACH WITH MANLY KAYAKS

Information still to be supplied for this as we are changing package options, use placeholder for now.



PADDLE & PICNIC (min. numbers 20)

12pm to 4pm | Duration 4 hours

Double \$107.50
Single \$115.00

Four hours of Kayak hire, a conference buffet lunch with soft drinks and juices set up on the Boilerhouse terrace or lower deck.

PADDLE & SNACK (min. numbers 10)

12pm to 4pm | Duration 4 hours

Double \$87.50
Single \$95.00

Four hours of Kayak hire with sandwiches lunch, soft drinks and juices set up on the Boilerhouse terrace or lower deck.

PADDLE & GRAZE (min. numbers 20)

From 5pm | Duration 1 hour

Double \$79.50
Single \$82.00

One hour of kayak hire followed by one hour of platters and beverage package served on the Boilerhouse terrace. This is a one way to Q Station and includes complimentary parking.

PADDLE & PIZZA (min. numbers 20)

From 5pm | Duration 1 hour

Double \$84.50
Single \$87.00

One hour of kayak hire followed by pizza deck dinner and beverage package served on the Boilerhouse terrace. This is a one way to Q Station and includes complimentary parking.



GIANT GAMES OR TABLE TENNIS

Available for the day

Giant Games
3 games \$125 | 5 games \$200

Table Tennis \$100

Beach Towel Rental \$5 per person

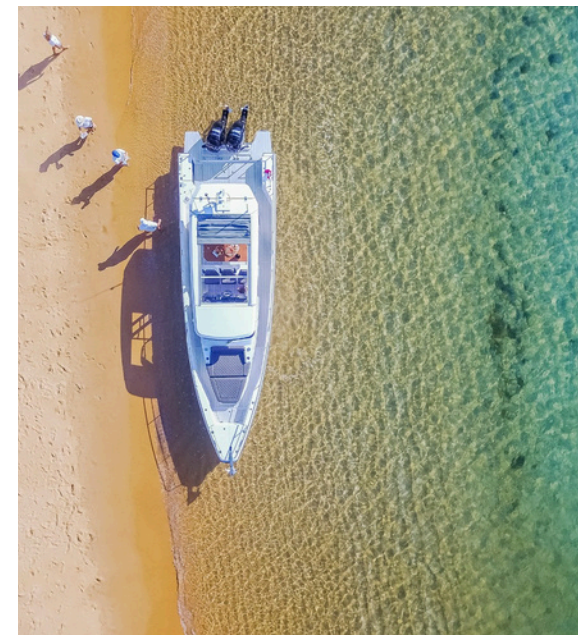


COCKTAIL MASTERCLASS

Shake up your conference or event at Q Station in a fun and unique way! Learn how to make 3 different cocktails, then sit back, relax and enjoy them.

Standard Masterclass \$49 per person
Aperol Spritz, Mojito & Espresso Martini

Premium Masterclass \$59 per person
Cosmopolitan, Margarita & Daiquiri



HIRE A BOAT AND CRUISE THE HARBOUR WITH MY SYDNEY BOAT

Looking for a way to wow at your event or conference? Q Station has partnered with My Sydney Boat to offer you the option of adding a private charter experience before, during or after your event, picking up directly from Q Station Wharf.

Charters are available for groups of 10, and can run from as little as an hour and a half up to 6 hours, you choose!



PINNACLE TEAM EVENTS

pinnacleteamevents.com.au

Pinnacle Team Events creates unforgettable team building experiences that empower & motivate teams. With more than 20 years' experience in corporate events, Pinnacle Team Events has over 100 live, virtual & hybrid team building activities available to conferencing groups at Q Station Manly.

Their experiential events are professional, entertaining, thought provoking and most importantly, fun! Pinnacle's range of options include:

TOP 5 EVENTS AT Q STATION

1. Amazing Race
2. Survivor
3. Charity Events – Tikes on Bikes, Helping Hands, SolarBuddy, Water Works, WIRES Wildlife
4. Beach Olympics
5. Laser Clay Shooting



BE CHALLENGED

bechallenged.com.au

Since 2008 Be Challenged have specialised in workshops and programs designed to foster team cohesion, personal growth, skills and job satisfaction. In that time, we have engaged over 468,000 participants of some 5,760 programs for 1947+ happy customers.

Each program has a specific focus and uses different methods and delivery formats, separated into three categories:

FUN & TEAM BUILDING

- Flat Out Afloat
- Survivor
- Team Opportunity

LEARNING & DEVELOPMENT

- Peak Performance
- DiSC Workshop
- 5 Behaviours of a Cohesive Team

CONFERENCES & MEETINGS

- The Big Picture
- Beat the Box
- The Infinite Loop

THE BITS YOU NEED TO KNOW

GETTING THERE

Q Station is located on Sydney's Northern Beaches, just a 5 minute drive from Manly and 30 minutes from the CBD. Free parking is available at the entrance to our site. We offer a complimentary shuttle transfer from Manly Wharf. Speak to the team to find out more!

TRANSPORT

Q Station's shuttle bus will transport day guests between the car park, wharf and the function spaces. We ask that guests allow at least 15 minutes before commencement of the function to allow time to arrive at the venue.

AUDIO VISUAL

Encore Event Technologies are specialists in a full range of audio visual hire and services; with over 30 years' experience helping to create successful events. Services range from basics such as whiteboards and flipcharts to sound and lighting, data projection and screens, computers and audio visual conferencing. Should you have any AV requirements for your event, please contact:

Abraham Barahona
abraham.barahona@encore-anzpac.com
+61 2 9466 1588





#ANEWPLACETODISCOVER

@QSTATION

@QSTATIONMANLY

02 9466 1521

SALES@QSTATION.COM.AU

WWW.QSTATION.COM.AU