



Q STATION
A NEW PLACE TO DISCOVER

**PARTIES &
EVENTS**





THE ULTIMATE CELEBRATION VENUE

Located within a 30-hectare site on the North Head of Manly you will find a unique destination, that is Q Station. An enduring part of Sydney's history, that once served as the Quarantine Station for migrants arriving in Australia, can now be experienced 365 days a year. Located in the Sydney Harbour National Park, Q Station offers a wide variety of experiences for day trips or overnight guests.

Q Station is a fully integrated destination offering hotel accommodation, unique venues and outdoor sites for events, conferences and weddings, tours and educational programs including the well-known "after-dark tours", direct access to Sydney Harbour and the Australian bush. Restaurants and bars offer a wide range of dining options from a light snack to a gourmet dining experience.

Elevate your next special occasion by choosing Q Station as the perfect venue. Our spaces have celebrated hundreds of happy occasions, such as:

- Engagement Parties
- Birthday Celebrations
- Christenings
- Baby Showers
- Bridal Showers & more!

FOOD & BEVERAGE OPTIONS

Q STATION OFFERS A WIDE RANGE OF
DINING OPTIONS TO SUIT THE STYLE
AND FORMAT OF YOUR EVENT.



FOOD OPTIONS

CANAPÉS

½ hour duration	\$24.00 per person
1 hour duration	\$33.00 per person
1 ½ hour duration	\$40.00 per person
2 hour duration	\$45.00 per person
3 hour duration	\$54.00 per person

PRIVATE DINING

2-Course Alternate Menu	\$99.00 per person
Includes 2-course alternate serve, house beverage on arrival and 3 hours room hire	
3-Course Alternate Menu	\$115.00 per person
Includes 3-course alternate serve, house beverage on arrival and 3 hours room hire	
Shared Style	\$120.00 per person
Includes 3-course shared menu, house beverage on arrival and 3 hours room hire	

BOILERHOUSE

2-Course Shared Dinner Menu	\$80.00 per person
3-Course Shared Dinner Menu	\$95.00 per person
Boilerhouse Pizza Deck	\$55.00 per person
Burger Grill	\$55.00 per person
Big BBQ	\$75.00 per person
Shared Lunch Menu	\$75.00 per person



PLATTERS (Serves 8 - 10 Guests)

Antipasti \$90.00 per platter

Selection of cured meats, marinated vegetables, olives and lavosh crackers

Cheeses \$90.00 per platter

Selection of three Australian cheeses with quince paste, grapes and lavosh crackers

Oysters \$130.00 per platter

Two dozen freshly shucked Sydney rock oysters with lemon and mignonette dressing

Hot Finger Food \$90.00 per platter

Includes chef selection of four hot items, including one vegetarian

Sushi - 60 pieces \$260.00 per platter

Selection maki rolls, California rolls and nigiri with soy and wasabi

Seasonal Fruits \$70.00 per platter

Petits Fours \$12.00 per person

3 pieces per person

GRAZING TABLE

Selection of charcuterie, cheeses, antipasti, seasonal fruit, lavosh crackers, fresh bread \$25.00 per person

BEVERAGE OPTIONS

Sparkling, white & red wine, beer & cider

STANDARD

2 Hours	\$32.00 per person
3 Hours	\$38.00 per person
4 Hours	\$43.00 per person
5 Hours	\$47.00 per person

DELUXE

2 Hours	\$37.00 per person
3 Hours	\$43.00 per person
4 Hours	\$47.00 per person
5 Hours	\$51.00 per person

ELITE

2 Hours	\$42.00 per person
3 Hours	\$48.00 per person
4 Hours	\$52.00 per person
5 Hours	\$56.00 per person

PREMIUM

2 Hours	\$53.00 per person
3 Hours	\$62.00 per person
4 Hours	\$71.00 per person
5 Hours	\$80.00 per person

PRESTIGE - DE BEAUREPAIRE WINERY

2 Hours	\$65.00 per person
3 Hours	\$76.00 per person
4 Hours	\$90.00 per person
5 Hours	\$98.00 per person

Make it french!

COCKTAILS

2 Hours	\$60.00 per person
3 Hours	\$80.00 per person
4 Hours	\$95.00 per person
5 Hours	\$100.00 per person

NON-ALCOHOLIC DRINKS

2 Hours	\$20.00 per person
3 Hours	\$25.00 per person
4 Hours	\$30.00 per person
5 Hours	\$35.00 per person

Ask our Sommelier to quote your own beverage package from our NSW awarded Boilerhouse restaurant wine list. Beverages on consumption can be organised through the events team.

GROUP ACTIVITIES

Q STATION HAS A DIVERSE RANGE OF ENGAGING ACTIVITIES DESIGNED TO ENHANCE THE EXPERIENCE FOR ALL GUESTS





GIANT GAMES OR TABLE TENNIS

Giant Games
3 games \$125
5 games \$200

Table Tennis
\$100



COCKTAIL MASTERCLASS

Shake up your conference or event at Q Station in a fun and unique way! Learn how to make 3 different cocktails, then sit back, relax and enjoy them.

Standard Masterclass \$49 per person
Aperol Spritz, Mojito & Espresso Martini

Premium Masterclass \$59 per person
Cosmopolitan, Margarita & Daiquiri



KAYAK, SNORKEL OR STAND-UP PADDLE BOARD

We offer a wide range of equipment for kayaking, stand-up paddle boarding, and snorkelling available for rental. With a touch of luck and a keen eye, you might be fortunate enough to catch a glimpse of a playful clownfish nestled among the swaying sea grass.

ACCOMMODATION

Q STATION'S 105 ACCOMMODATION ROOMS ALL OFFER PRIVACY, CONTEMPORARY COMFORT AND A TRULY UNIQUE SETTING TO COMPLETE YOUR RELAXING EXPERIENCE OF THE SITE.



Q STATION OFFERS A RANGE OF DIFFERENT ROOM TYPES INCLUDING THE FOLLOWING:



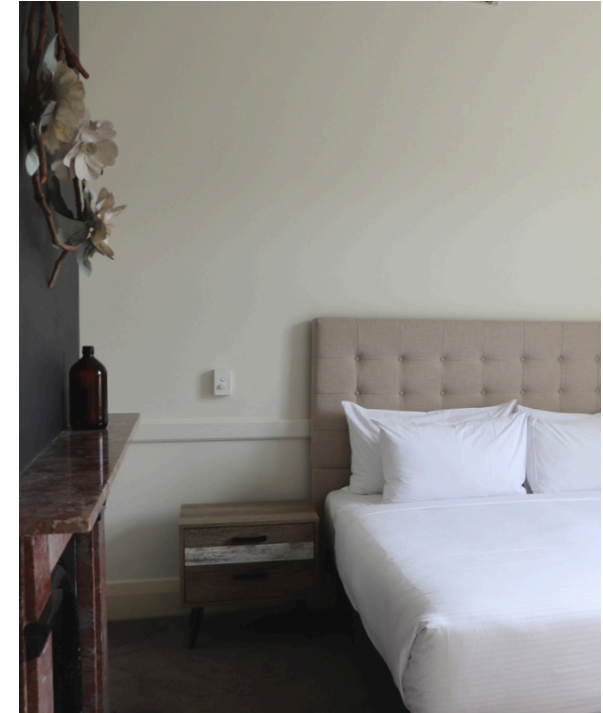
HERITAGE ROOMS

Our Heritage rooms come in four distinct rooms types including our Heritage Harbourside rooms featuring stunning glimpses of Sydney Harbour, as well as our Heritage Queen, Heritage King and Heritage Suites. Each room is comfortably designed with either a Queen or King bed, French style doors that open onto the balcony, and ensuite bathroom. Rooms can accommodate 2 people, or our Heritage Suites can accommodate 3 adults or 2 adults and a child.



THREE-BEDROOM COTTAGES

Once used as quarantine staff homes, these spacious three bedroom cottages have spectacular views of the grounds, harbour and historic buildings of Q Station. They feature one king room as well as two queen rooms, a living room, bathroom and kitchenette with cooking facilities. While every cottage is different, most feature backyards with balconies or a verandah. These rooms are great rooms if looking for a twin share option or a re-connection cottage.



THE TERRACES

The Terraces, originally used as doctors and nurses quarters, provide the ultimate accommodation choice for families or groups due to their more private location away from the main accommodation precinct. Nestled in the hill surrounded by National Park with sweeping views across the top of Boilerhouse Restaurant and headland beyond, these two apartments have different configurations, and sleep six.



#anewplacetodiscover

@qstation

@qstation

02 9466 1520

sales@qstation.com.au

www.qstation.com.au