

Q STATION EDUCATION

STAGE 5: MIGRATION PERSPECTIVES

Movement Across the Globe Through Quarantine

How have world events influenced the migration across the globe, and what part has Quarantine played in this? Investigate the reason for travel, and experience of those who arrived in Australia, and the changing way of life for those migrating.

Through a site study, discover the different periods of migration into Quarantine, throughout almost the entire 1750s-1900s, what life was like for those entering, and the living conditions for these groups in Australia.

What will you do on the tour?

Students will complete a historical based site study of Quarantine, evaluating how life changed for those migrating to Australia, and the experiences of the different waves of migration coming through Quarantine. Use the primary and secondary sources around the Quarantine Station to explore and investigate history, and the changing times.



Syllabus Links

Addresses outcomes and key enquiry questions related to

The Making of the Modern World

Topic 1B Movement of peoples (1750-1901)

Topic 2A Making a nation

The Modern World and Australia

Topic 5C Migration Experiences (1945-present)

HT5-1 explains and assesses the historical forces and factors that shaped the modern world and Australia

HT5-2 Sequences and explains the significant patterns of continuity and change in the development of the modern world and Australia

HT5-3 Explains and analyses the motives and actions of past individuals and groups in the historical contexts that shaped the modern world and Australia

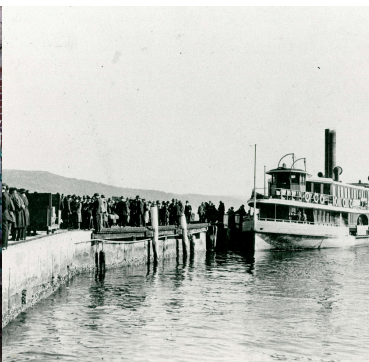
HT5-4 Explains and analyses the causes and effects of events and developments in the modern world and Australia

HT5-6 Uses relevant evidence from sources to support historical narratives, explanations and analyses of the modern world and Australia

HT5-7 Explains different contexts, perspectives and interpretations of the modern world and Australia

HT5-9 Applies a range of relevant historical terms and concepts when communicating an understanding of the past

HT5-10 Selects and uses appropriate oral, written, visual and digital forms to communicate effectively about the past for different audiences



Q STATION EDUCATION

STAGE 5: MIGRATION PERSPECTIVES CONT.

How can we tailor this tour to your group?

Over 156 years of history has come through the Quarantine Station, and with that, thousands of people. We can tailor this tour to focus on any migration experiences you may be focusing on in your class currently, or give a general overview into migration into Australia.

Some of the key events we can focus on include:

- Initial settlers
- Federation + The Immigration Restriction Act
- World War I
- Post World War II

This excursion will also satisfy as the mandatory site study for Stage 5, using all artefacts, primary and secondary sources to come to conclusions, and view evidence, for these movement of peoples.



Details

2025 Costs

\$25 per student

Group Sizes

Max 30 students per group, each with their own guide

Tour Timing

2 hour guided tour, + time afterward to eat lunch with a view

Please reach out if you have any questions, or to lock in your 2025 visit dates

